

Details of MGIRI Tender No. 4/2010

1. Textile Lab Equipments: Ginning m/c, Desi wool pre-spinning machines, wool and silk testing equipment, Apparel CAD Software:

S.N.	Item	qty	Specification
1.1	Ginning m/c	1	Double roller , lint production capacity 30-40 kg per hour.
1.2 Desi wool pre-spinning machines	Wool opener	1	24'' wool opener m/c ,production capacity 25-30kg per 8 hrs
	Wool carding m/c	1	20'' wool carding m/c, single/double swift metallic wire, production capacity 25-30kgper 8 hrs.
	Wool draw frame machine	1	Production capacity 25-30 kg per 8 hrs
	Wool BobbIner	1	12-15 Spindles ,production capacity 25-30 kg per 8 hrs
1.3 wool and silk testing equipment	Wool Fibre micron tester	1	Specially Suitable for Indian wool fibre testing
	wool grease content tester	1	Specially Suitable for Indian wool fibre testing
	wool fibre length tester	1	Specially Suitable for Indian wool fibre testing (100 x or 200x)
	Wool fibre strength tester	1	Specially Suitable for Indian wool fibre testing
	Wool/silk Yarn twist tester(digital)	1	Specially suitable for wool/silk yarn testing,auto variable length ,digital type
	Double yarn twist tester	1	Suitable for double yarn ,digital type
1.4 Apparel CAD Software	Pattern Engineering, Grading and Marker Planning Software:	1	Pattern Engineering, Grading and Marker Planning Software should be able to engineer patterns, grade these into multiple sizes and create markers and should have the following features namely Size Setup, Unit Setup, Style Setup, Snap and Block Setup – Pattern Making using Block Setup. Types of Lines and Curves, Tracing – Extracting the Patterns, Duplicating and Making Modifications – Notches and Internal Markings – Button and Button Holes – Measurement. Grading, Stacking and Supporting Tools – Darts, Pleats and Fullness – Join, Open and Cutting the Patterns – Flip, Rotate and Align – Sean Allowances, Fold and Create Parallel – Zoom, Select, Convert Drawing, Insert Point – Shrinkage, Fix Piece – Adding Patterns from Previous Styles – Import and Export – Plot and Digitize, Marker Setup, Piece Setup, Fabric Setup, Variant Setup, Ratio Setup, Garment Setup, Repeat Setupm Buffer Setup, Shrinkage and Other Setup, Place, Rotate, Flip, Mark, Align, Measure, Duplicate, Replace, Advance Duplicate, Marry, Divorce, Match, Cancel Match, Buffer

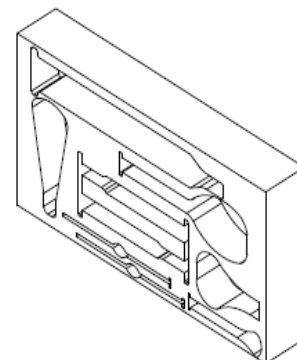
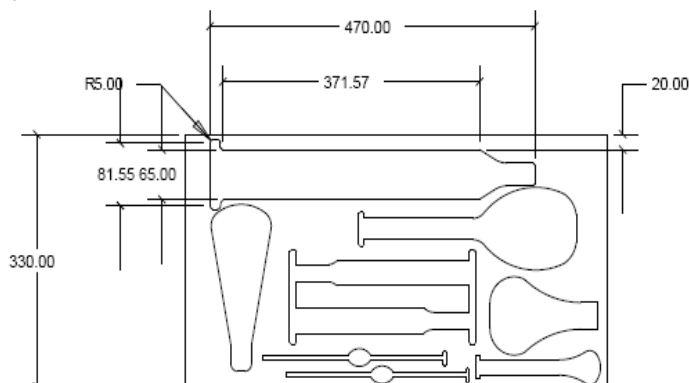
		(Piece to Piece Gap) – Fine Rotate – Add Previous Styles – Reference Marker – Consumption Details.
Fashion Studio Software	1	Fashion Studio Software should have the following features namely Texture Mapping, Color Reduction, Colorways, Color Communication, Design & Repeat, Fabric Design, Spec. Creation, 3D Product Visualization, Edit Studio, Layer Management: Add Layer, Set Layer, Move Layer, Rescale Layer - Pick Object, Create Curve, Create Surface (Common), Create Surface (Rectangle), Create Surface (Common Obj), Create Text, Create Text, Create Note, Create Tap, Modify Clip Border, Add New Clip Border, Edit Curve, Rescale Surface Grid, Texture Table, Rescale Texture, Edit Border Line, Create Border Shadow, Pick Color – Grid Formation: Modify Surface Grid, Edit Surface Grid – Edit Texture: Set Texture Dye, Texture Table, Clip Image (Normally), Clip Image (Advanced), Expand Image, Shift Image, Edit Image’s Alpha, Change Tone, Change Lighting Saturation, Colour Balance, Pen, Fill Color, Over Lap, Group Color, Remove Noise Color, Change Color, Create Oven Material, Pick Color – Edit Canvas: Draping, Local Skew.
Style Management Software	1	Style Management Software should enable management of various designs and should have the style features namely Order Details, Order Confirmation, Moodboard Development, Colour Story, Tech Pack, Costing, Size Spec, Vendor Management, TNA, Sales and Cataloging.
Merchandising Manager Software	1	Merchandising Manager Software should enable early management of merchandising function and should have the following features namely inquiry, costing sampling, order processing, supplier management, time and action calendar and shipping.
Cut Planning Software:	1	Cut planning software to be used in the fabric spreading and cutting room should enable Automated Marker Allocation, Automated Plies Allocation, Automated Spread Planning, Automated Rolls Management and Fabric Reconciliation.

2. Chemical Lab Equipments: Dye Cutting Punch for Soap and detergent testing kit

NAME OF THE GOODS	Dye cutting Punch for PUF of density 45
SPECIFICATION OF GOODS	As per Drawing given on website.
QUALITY SPECIFICATION	Base made of plywood 18 mm thickness and Blade made up of High speed steel
UNIT OF MEASUREMENT	In MM
QUANTITY OF GOODS	5 (with 2 sets of each in PUF of density 45)
WARRANTY	-
AFTER SALES- SERVICE SUPPORT	1 yr
TAX	Excluding Tax
DISCOUNT	-
TRANSPORTATIONS (INCLUSIVE)	-
COMMISSIONING	-
TRANSIT INSURANCE	-
PAYMENT TERMS	Release after delivery and demonstration at MGIRI.

If party needs more information can visit Chemical Industries Section or contact over phone.

Drawing
A}

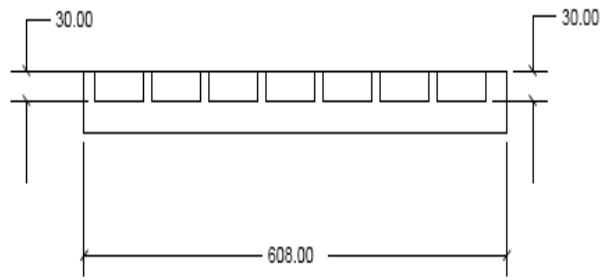
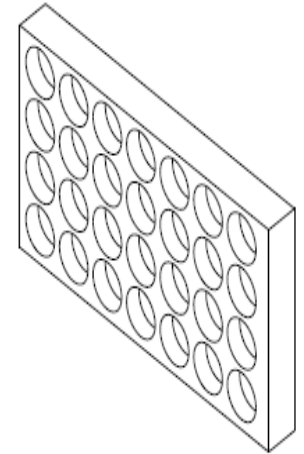
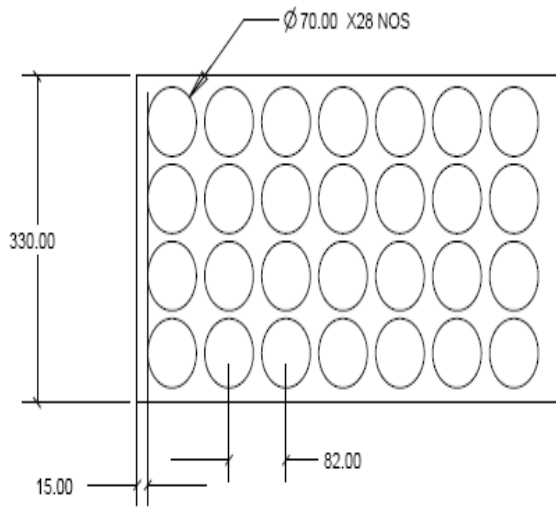


ALL DIMENSION ARE IN MM



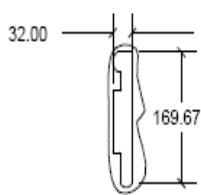
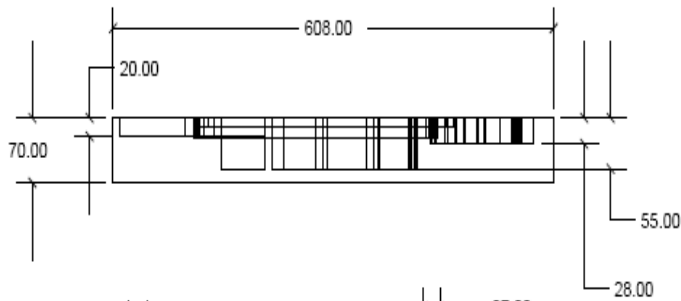
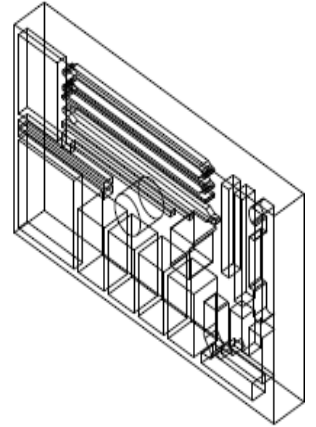
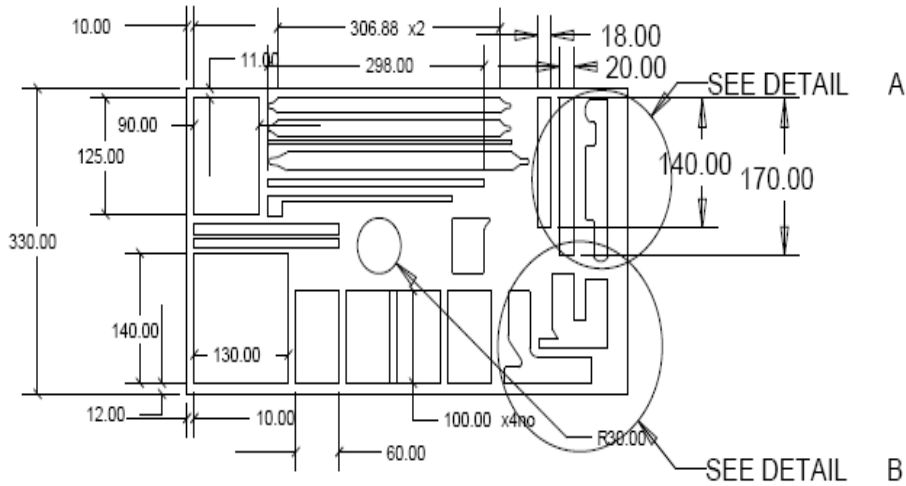
NOTE:- All diamesions of the all feature should be taken from the standard dimension of equipments and appratus used in chemical labortaries

B)

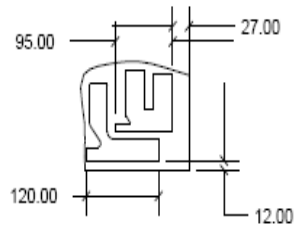


ALL DIMENSIONS ARE IN MM

C)



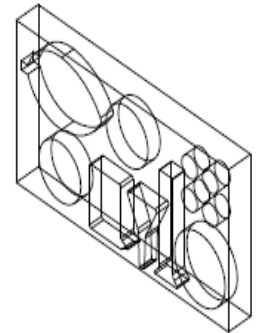
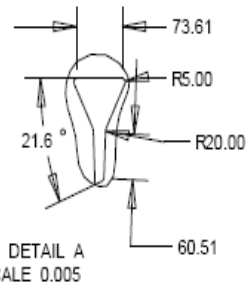
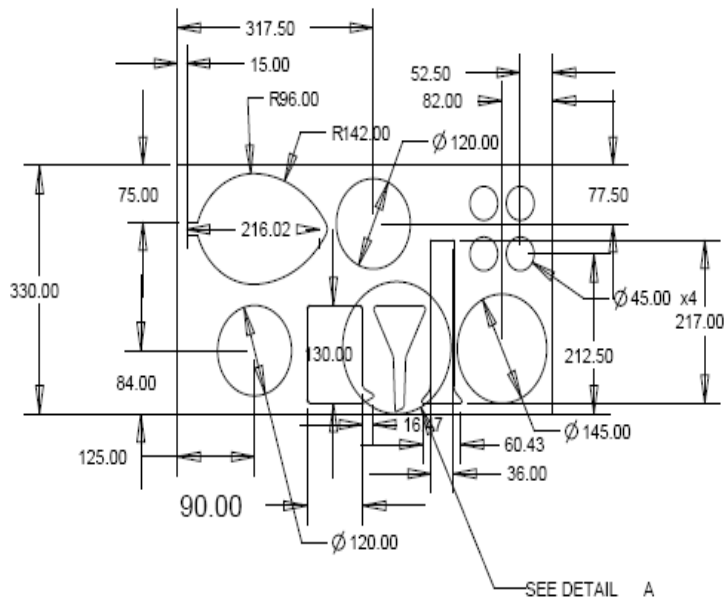
DETAIL A
SCALE 0.005



DETAIL B
SCALE 0.005

NOTE:- In these view all dimension of feature are approximate so take dimensions as per standard dimension of equipment and appratus use in chemical laboratory

D}



SCALE 0.005



3. BIO Lab Equipments:

3.1 Trinocular Microscope specifications

Frame : 45 degree inclined trinocular observation tube rotatable through 360 degree fitted with fungus resistant, anti- reflection coated prism

Magnification: 40X and 100X oil immersion

Stage: Stage size 125m X 145mm with traverse area 50 X 70 mm. Right hand co-axial low drive mechanical stage

Nosepiece: Quadruple revolving nosepiece

Focusing: Focusing by co-axial coarse and fine focusing controls

Eyepieces: Compensating wide field single eyepiece .

Objectives: Anti-fungus achromatic objectives 4x, 10x, 40x (spring) and 100x (spring, oil immersion).

Condenser: Abbe condenser 1.25 N.A focusable with rack & pinion with iris diaphragm. With blue filter

Illumination: Built-in 6V20W halogen light illuminator

Finish: White durable acid resistant epoxy coated finish

Megapixels: 6 megapixels or 8 megapixels

Adapter: Microscope to camera adapter supplied

Microscope Types: Fits in eyepiece tube of almost all monocular, binocular and trinocular Indian and Imported microscopes. Recommended to be used with microscope having built in light illuminator

Zoom: Optical 3x (typically) Digital 4x (typically)

Memory Card: Not required

Close up : Down to ~ 1"

Charger: Battery charger and NiCd/NiMH batteries supplied

3.2 Deep freezer

Capacity 350litre , Digitally controlled cabinets ,vertical, stainless steel mirror finish inner chamber of thick gauge, duly polished and fusion welded leak proof , cabinet in all sides excellent quality gasket to seal chamber from atmospheric conditions, sub doors are also provided. outer body is powder coated for lasting finish and corrosion resistance. Air cooled single stage (for -10°C to -40°C) , hermetically sealed compressors Controlled with digital indicator cum controller along with Power failure alarms / temperature raise alarms / voltage stabilizer with high voltage low voltage cut-offs

3.3 Specifications of Laboratory rota vapour

Bath temperature	20 to 180°C
Bath Capacity	4.00Litre
Refrigeration capacity	-50°C
Temp control accuracy	+/- 1°C
Power	Single phase
VAC	Minimum 700mm/Hg
Display	Digital
Dimensions	15.6"L x 17.3"W x 14.1"H
Capacity	Detachable 1-3L
Rotation speed range	20 to 270 rpm
Configuration	Diagonal
Temp safety limiter	190°C
Glass type	Standard borosilicate

3.4 Soya milk and tofu machine specifications

Capacity : 2kg /hr soya crushing/ cooking or 15litre soya milk /hr

Grinder Cooker: Inos, Tubular Boiler, Filter Press, Tofu Box, Tofu Press, Spares and Tools

4. Acoustic Treatment for FM Community Radio Station cum AV Studio

Sl.No	DESCRIPTION	QTY
4.1	<u>Acoustics</u> Providing 20 mm Acoustic Boards, Wooden Reapers 2" X 3", Glass wool 50 mm Density, wall mounting, labour, hardware & fixing charges.BIS Spec.	1400 Sqft
4.2	<u>False Ceiling</u> Gypsum Mineral Fibre Acoustic tiles (2X2), Thermocol sheets, Tegular Aluminium grids, labour charges, etc.	780 Sqft
4.3	<u>Vinyl Flooring</u> Acoustic tiles, Adhesive fixing, labour charges, etc.	780 Sqft
4.4	<u>Acoustic Door</u> Providing and fixing of Teak wooden frame of size 3'X 6' plus sound proof door 40mm size, with 50mm density glass wool, acoustic seal, fixing, painting & Labour charges.	3 Nos.
4.5	<u>Glass Window Frame</u> Teak wooden frame of size 3'X3', Sound proof glass 8 mm X 2, fixing, painting & Labour Charges.	2 Nos.
4.6	<u>Aluminium Door</u> Aluminium Frame & Half glass	1 Nos.
4.7	<u>Studio furnitures.</u> a. Control Desk b. RJ Table c. Chairs d. Editing Desk	1 no. 1 no 8 nos. 2 nos.
4.8	<u>Electrical Works</u> with Room Lighting. according to the final design	Ls
4.9	<u>Lighting grid</u> for Studio Floor according to the final design .	Ls.
4.10.	<u>Studio Lights or LED lights.</u> 4X55 W Cool Studio Lights	8 nos.
4.11	<u>Interiors</u> a. Texture Painting according to the final design. b. Lounge Seating.	1 set
4.12	<u>Doors</u> Flush doors of 3'X6'	3 nos.

Note- The entire Acoustics should be designed using materials within the frame work of Green Building Standards, having **LEEDS** certifications; this will lead to lower recurring expenditure on Power requirements by nearly 40%.

FORM I: GENERAL DETAILS OF THE SUPPLIER

Tender No. 4/2010

S No.	Aspects	Details		
1	Name, address and contact details	Name:		
		Address:		
		Email:	Ph:	Fax:
2	Regd. With			
	Registration Details			
3	PAN Details			
4	Equipments for which you wish to quote:			
5	EMD Details	Rs. 10,000	In favour of Director, MGIRI, Wardha.	At SBI Bank, wardha.
6	Institutions who are your clients (attach extra sheet if necessary)			
7	Are you agreeable to supply under bill discounting scheme (Our Banker is SBI main branch, Wardha)			
8	Any other details			

It is certified that the above information and the documents enclosed are correct and if found to be false the tender could be cancelled.

Yours faithfully

(Signature of Chief of Agency)

Name:
Designation:

